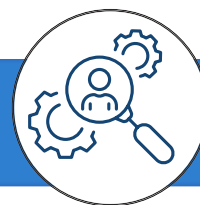




WORKSHOP ON RESEARCHERS' MOBILITY






Designing a regional mobility scheme for better access to Research Infrastructures in the Western Balkans

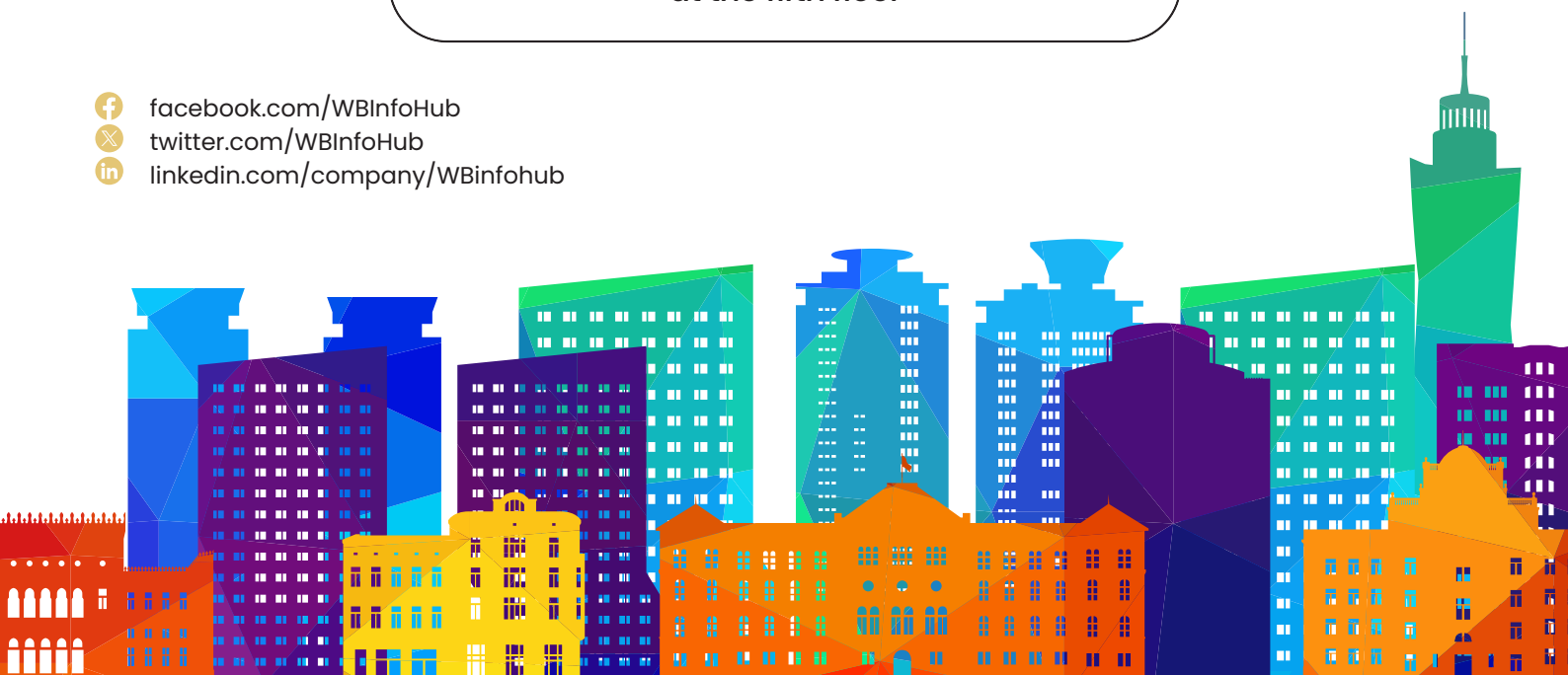
AGENDA

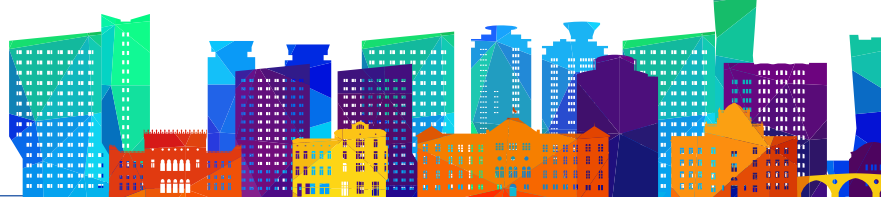
14 – 15 September 2023

The workshop will start on 14th at 13:00
and end on 15th at 12:00

Venue: Regional Cooperation Council (RCC),
Trg Bosne i Hercegovine 1/V, 71000 Sarajevo
Meeting Room: Athena conference hall
at the fifth floor

 facebook.com/WBInfoHub
 twitter.com/WBInfoHub
 linkedin.com/company/WBinfohub





DAY 1 • 14. 09. 2023

13:00 – 14:00

Registration

Joint lunch at “Four Seasons penthouse restaurant”
Franca Lehara 2, 71000 Sarajevo

14:00 – 14:10

Welcome

Sinisa Marcic | RCC
Elke Dall | ZSI

Moderator: **Ulrike Kunze** | DLR

14:10 – 14:25

Introduction

Birgit Ditgens | DLR

14:25 – 14:35

**Outcome of the POLICY ANSWERS conference
“Policy Dialogue on Aligning Priorities in the Western Balkans”**

Sanja Damjanovic | GSI

14:35 – 14:45

**Empowering Young Researchers: The Synergy of Research
Mobility and Access to Infrastructures**

Pradeep Ghosh | FAIR

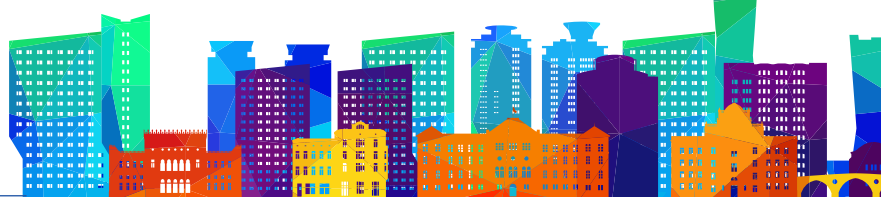
14:45 – 15:25

How to ensure sustainability of a regional mobility scheme?
Short inputs from Western Balkan stakeholders

Stakeholders from the WB

Birgit Ditgens | DLR





15:25 – 16:35

What kind of projects should be funded? *Worldcafé*

Facilitators:
Birgit Ditgens | DLR, **Elke Dall** | ZSI,
Katarina Kreceva | FITD, **Ralf Hanatschek** | DLR

16:35 – 16:55

Coffee Break



16:55 – 17:25

What kind of projects should be funded? *Presentation of Worldcafé results, discussion*

17:25 – 17:50

Which are the parameters of the scheme? Type, scope and rates of funding *Focus groups*

Facilitators:
Katarina Kreceva | FITD, **Ralf Hanatschek** | DLR

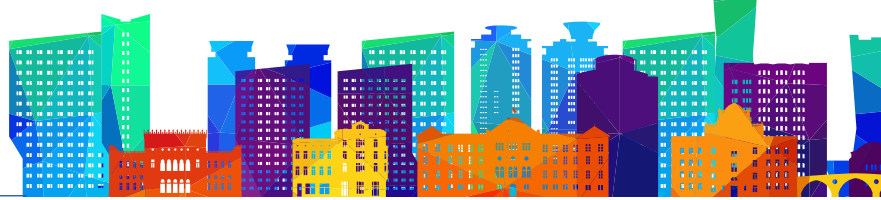
17:50

End of day

19:00

**Working dinner – Discussions to be continued
at Hotel Holiday, Zmaja od Bosne 4, 71000 Sarajevo"**





DAY 2 • 15. 09. 2023

09:00 – 09:10

WELCOME AND RECAP OF FIRST DAY'S RESULTS

Ralf Hanatschek | DLR

09:10 – 10:20

Steps towards a draft implementation plan for a pilot scheme. *Worldcafé*

Facilitators:
Ralf Hanatschek | DLR, Elke Dall | ZSI,
Katarina Kreceva | FITD, Birgit Ditgens | DLR

10:20 – 10:35

Coffee Break



10:35 – 11:05

Steps towards a draft implementation plan for a pilot scheme *Presentation of Worldcafé results, discussion*

11:05 – 11:25

Promotion of the pilot regional mobility scheme *Focus groups*

Ralf Hanatschek | DLR, Birgit Ditgens | DLR

11:25 – 12:00

WRAP-UP AND NEXT STEPS

Birgit Ditgens | DLR

Departure & Light lunch to go

