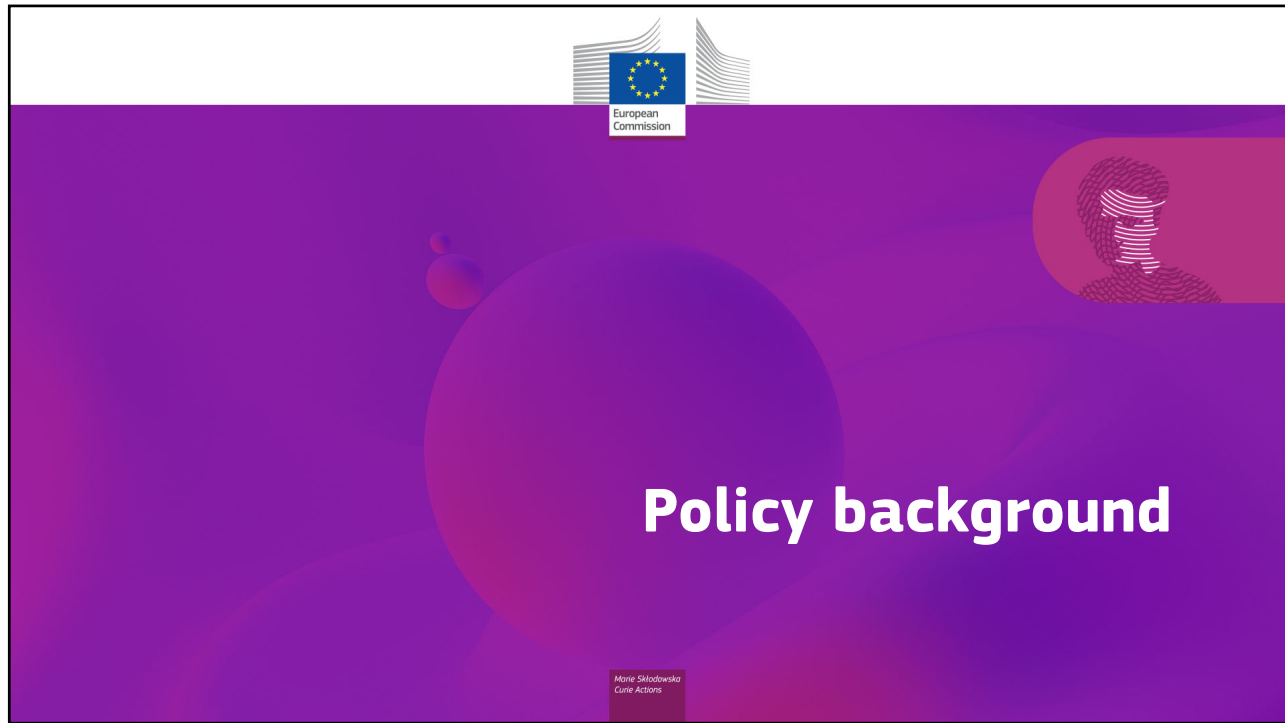


The slide features a dark purple background with a central image of a bust of Marie Skłodowska-Curie surrounded by a molecular structure and pink abstract shapes. At the top center is the European Commission logo. On the right, there is a circular graphic with a fingerprint-like pattern. The text on the slide includes: 'MSCA Marie Skłodowska-Curie Actions Developing talents, advancing research', 'MSCA Staff Exchanges', 'MSCA Advocacy, 06/11/2023', and 'Amir SPAHIC European Research Executive Agency'. A vertical text on the left reads 'Image source: iStockphoto.com'.

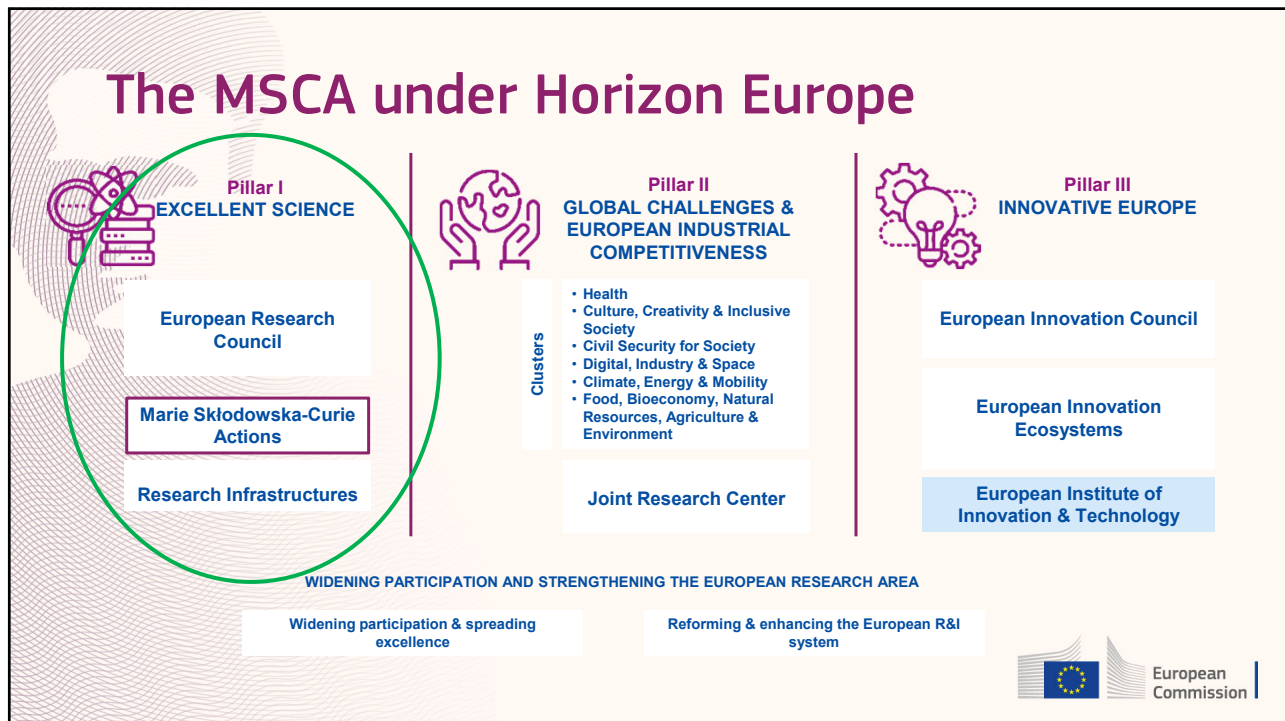
1

The slide is titled 'Overview' and features a circular flow diagram with three steps: 1. Introduction Policy background (Horizon Europe & MSCA) with a lightbulb icon; 2. MSCA Staff Exchanges with a group of people icon; 3. Application and evaluation with a target icon. A portrait of Marie Skłodowska-Curie is shown in the top right corner.

2



3



4

Pillar I: Excellent Science

Reinforcing and extending the excellence of the Union's science base

European Research Council

Frontier research by the best researchers and their teams

€16 billion

Marie Skłodowska Curie Actions


Equipping researchers with new knowledge and skills through mobility and training

€6.6 billion

Research Infrastructures

Integrated and inter-connected world-class research infrastructures

€2.4 billion



5

Marie Skłodowska-Curie Actions (MSCA)

The MSCA have **5** main actions

Doctoral Networks

implement doctoral programmes (including joint doctorates and industrial doctorates) by international partnerships of organisations from different sectors. They train highly-skilled doctoral candidates, stimulate their creativity, enhance their innovation capacities and boost their employability in the long-term.

Postdoctoral Fellowships

support researchers' careers and foster excellence in research and innovation. Researchers holding a PhD can carry out their research activities, acquire new skills and develop their careers abroad, whilst developing competences in non-academic sectors and working within interdisciplinary teams.

Staff Exchanges

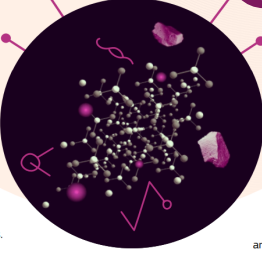

encourage short-term international and inter-sectoral exchanges of research and innovation staff through sustainable, collaborative projects in Europe and beyond. By doing so, they enhance knowledge and skills transfer and increase organisations' research and innovation capacities.

MSCA and Citizens

brings research and researchers closer to children, families and the public at large through the European Researchers' Night - the annual research communication and promotion event taking place at the end of September across EU Member States and Horizon Europe Associated Countries.

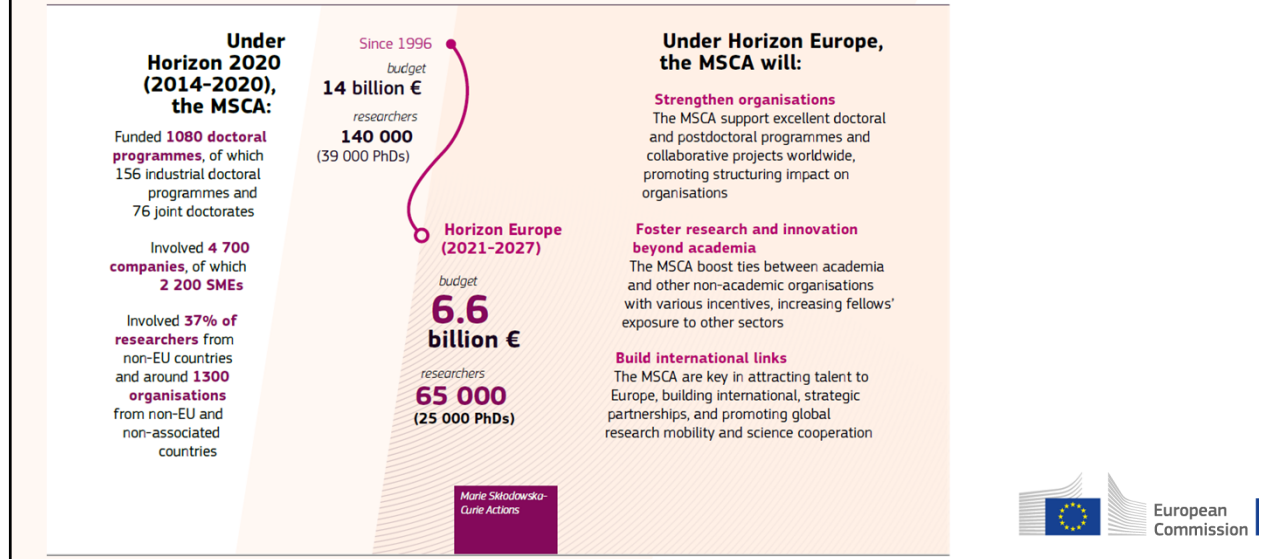
COFUND

co-finance regional, national and international doctoral and postdoctoral programmes for researchers' training and career development. The COFUND action spreads MSCA's best practices by setting high standards and excellent working conditions, and boosts training and international, interdisciplinary and inter-sectoral mobility.

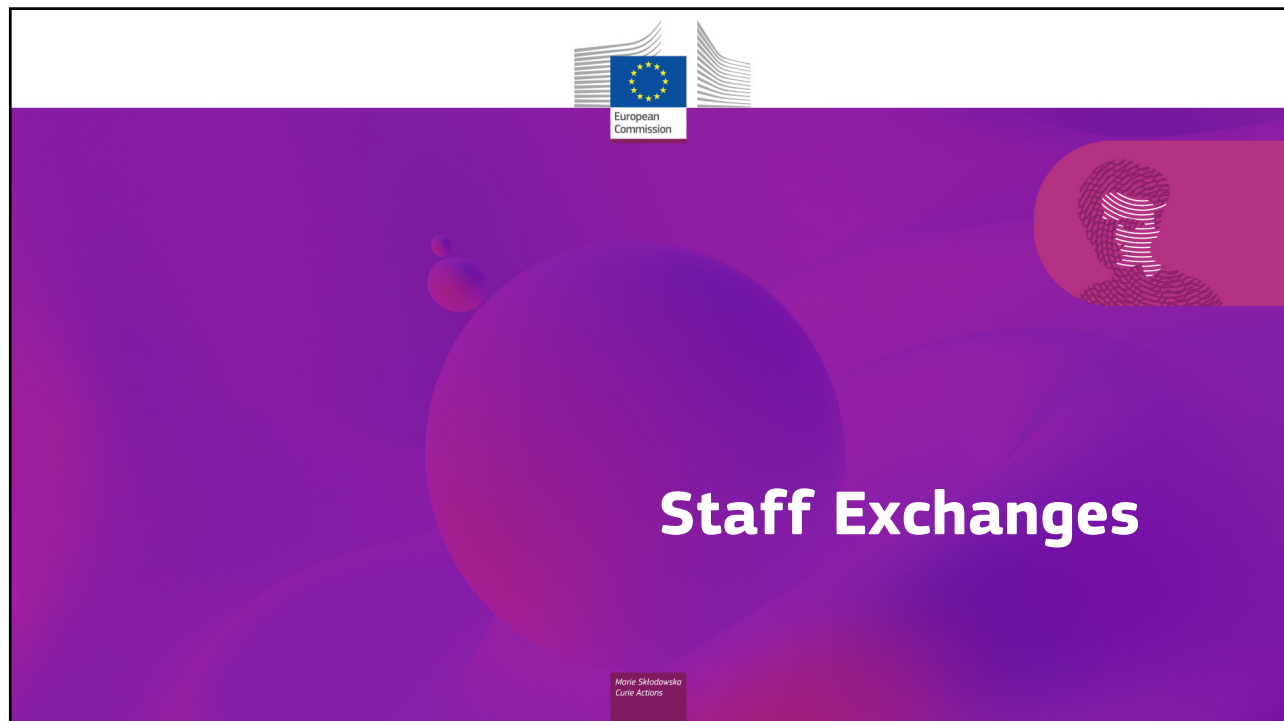



6

MSCA: Key figures



7



8

MSCA SE highlights 1/2

- **BOTTOM-UP APPROACH** – All research areas and topics.
- Collaboration through exchange of staff - **SECONDMENTS**
- **International, inter-sectoral and interdisciplinary**
- **FLEXIBILITY** – Short duration secondments -> up to 12 months.
- **MANY NON-ACADEMIC PARTNERS in SE projects** - Beneficiaries and associated partners.
- **Action does not focus exclusively on scientific deliverables** -> Most important outcome for SE is the secondment/exchange itself.



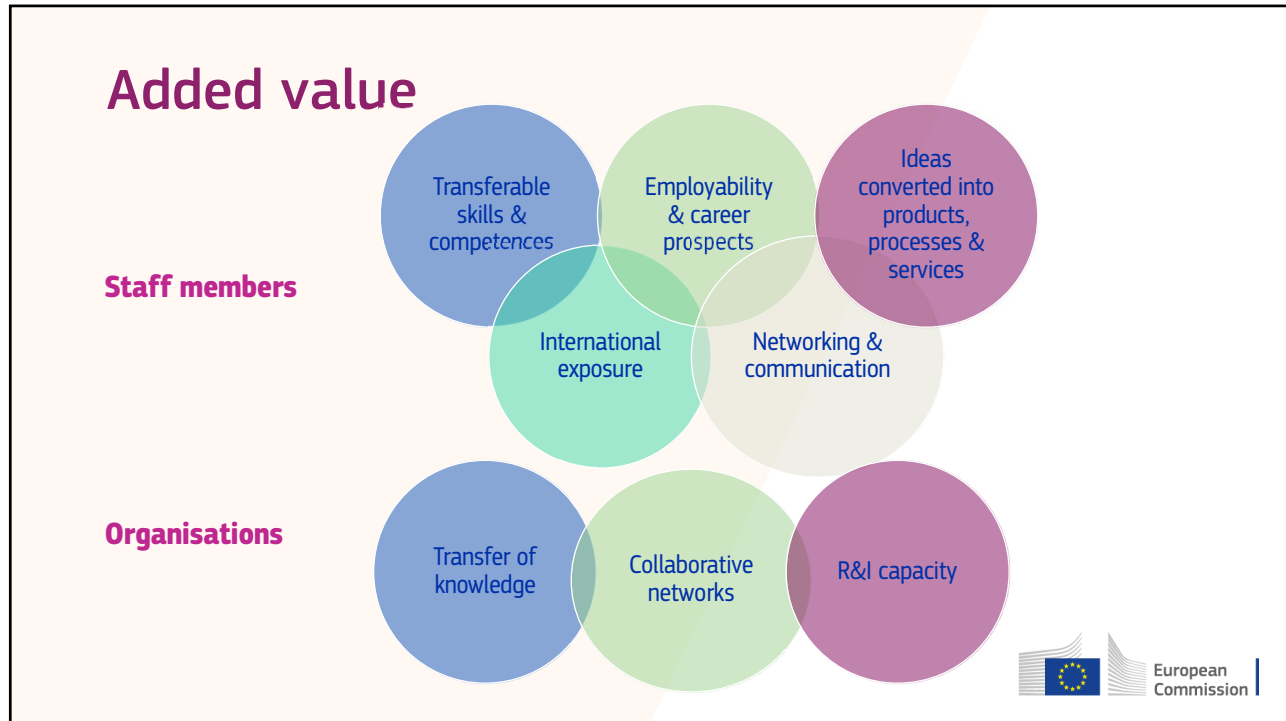
9

MSCA SE highlights 2/2

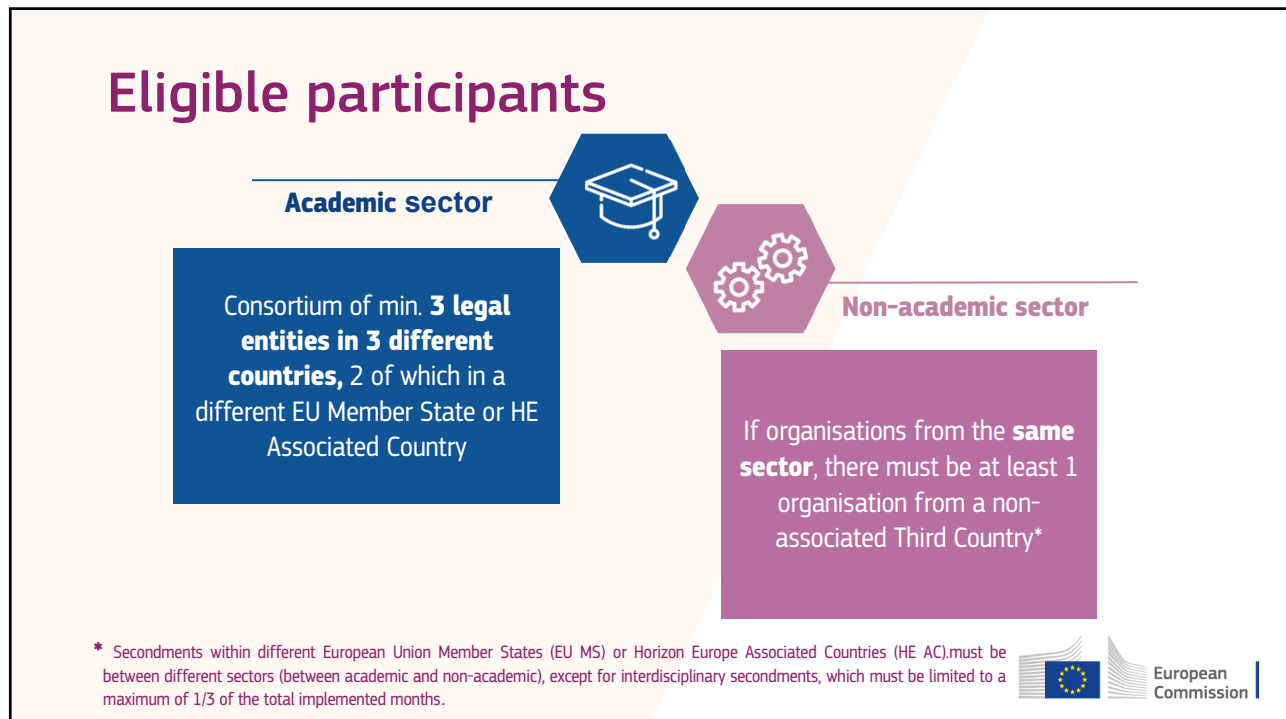
- **No need to be a doctoral candidate to be seconded** -> research, technical, administrative and managerial staff active in the R&I activities.
- **STRAIGHTFORWARD MANAGEMENT**– Use of unit costs -> triggered by the secondment (sending).
- **Funding not based on «real costs»** -> Use of unit costs. One unit = one month of eligible staff.
- **Funding not meant to replace salary** -> Category A unit costs meant to contribute to travel, accommodation, subsistence and other costs associated with the secondment/exchange.
- **«country coefficient» is not used** -> One month of secondment = 4600 Euro



10




11




12

Eligible staff



Seconded staff members



Any type of staff involved in R&I activities (researchers, administrative staff, managerial staff, technical staff)

Each staff member is seconded for a period of **1 to 12 months** (may be split into several stays *)


Researchers at any career stage (from doctoral candidates to postdoctoral researchers)

Staff needs to be devoted **full-time** to the action during the secondment

Actively engaged in research and/or innovation activities for at least **1 month** prior at the sending institution

After the secondment, staff should **return to their sending organisation**

* With one or several beneficiaries or associated partners.




13

Eligible for funding: exchanges/secondments

		"HOSTING" (receiving seconded staff members)			
		Academic organisation in MS/AC (1)	Non-academic organisation in MS/AC (2)	Associated Partners eligible for funding	Associated Partners non-eligible for funding
"SENDING" (sending staff members from organization)	Academic organisation in MS/AC (1)	1/3	✓	✓	✓
	Non-academic organisation in MS/AC (2)	✓	1/3	✓	✓
	Associated Partners* eligible for funding	✓	✓	✗	✗
	Associated Partners non-eligible for funding	✗	✗	✗	✗

^{1/3} This symbol refers to same sector secondments up to 1/3 of the total implemented secondments funded by the EU as long as they are demonstrated to be interdisciplinary.
 * Associated Partners eligible for funding (see List of Participating Countries in Horizon Europe)

Exchanges within the same country are not eligible.
 Exchanges between Associated Partners based in TC are not eligible



14

Same-sector secondments in Europe (MS/AC)



≤ **1/3** of the total secondments funded by the EU, if considered **Interdisciplinary**

Interdisciplinary secondments integrate aspects from two or more different scientific disciplines.

Important: **scientific panels + descriptors/first level MSCA keywords** from proposal form part A
(see [REA Website](#))



15

What does Staff Exchanges fund?



16

Key features – summary



DURATION

Max 4 years
(48 months)
360 PM per project



SECONDMENTS

1-12 months per staff
Mandatory interdisciplinary
secondments:
same sector, between
MS/AC for max 1/3 PM



UNIT COST

4600€ total
2 categories:
2300€ - Staff allowance
2300€ - Institutional





BUDGET

EU funding
average
78,5 Mio€/call

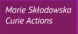


17





Application process




18

Current MSCA Staff Exchanges call

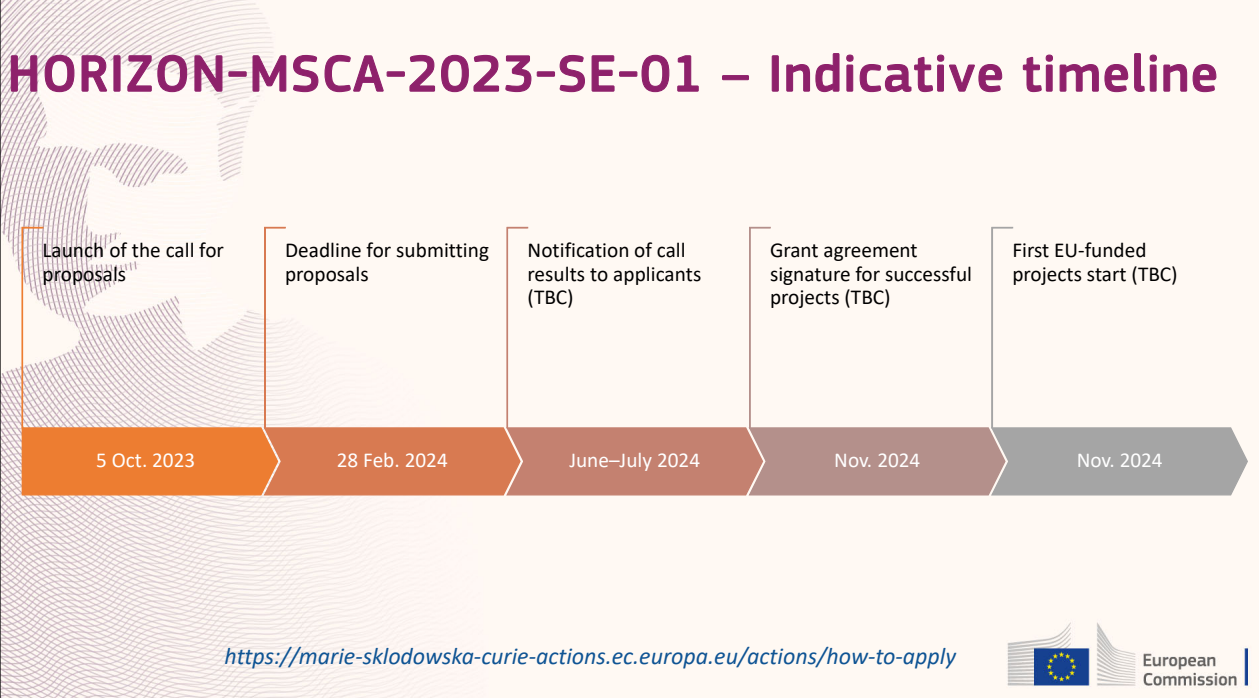
Call	2023	
	Opening Closing	Budget (M€)
Staff Exchanges	05/10/2023 28/02/2024	78,5

<https://marie-sklodowska-curie-actions.ec.europa.eu/actions/how-to-apply>




19

HORIZON-MSCA-2023-SE-01 – Indicative timeline



Milestone	Date
Launch of the call for proposals	5 Oct. 2023
Deadline for submitting proposals	28 Feb. 2024
Notification of call results to applicants (TBC)	June–July 2024
Grant agreement signature for successful projects (TBC)	Nov. 2024
First EU-funded projects start (TBC)	Nov. 2024

<https://marie-sklodowska-curie-actions.ec.europa.eu/actions/how-to-apply>



20

MSCA actions on Europa - REA Website

The screenshot shows the website interface for Marie Skłodowska-Curie Actions. The URL is marie-sklodowska-curie-actions.ec.europa.eu/actions/how-to-apply. The page title is "Developing talents, advancing research". The navigation menu includes Home, About MSCA, Actions, Funding, Jobs, Resources, What's new, and Science is Wonderful. The breadcrumb trail reads "You are here: Marie Skłodowska-Curie Actions / Actions / How to apply". A sidebar on the left lists various action types: About actions, Doctoral Networks, Postdoctoral Fellowships, Staff Exchanges, COFUND, and MSCA & Citizens, with "How to apply" selected. The main content area is titled "How to apply" and contains the following text: "This page will guide you through the main steps to apply for Marie Skłodowska-Curie Actions (MSCA) funding. Here, you will learn" followed by a bulleted list:

- which is the best type of funding for you to apply for
- how to apply
- how to find a job (for individuals)
- where to find more information and guidance

[REA Website link](#)



21

Staff Exchanges 2023 call for proposals

The screenshot shows the REA website's "Funding and tenders" section. The search bar contains "Type your Keywords...". The left sidebar shows filters for "Match whole words only", "GRANTS", and "TENDERS". The main content area displays a list of funding opportunities. A red arrow points to the "MSCA Staff Exchanges 2023" entry, which has a "Call for proposal" button. The details for this entry are as follows:

MSCA Staff Exchanges 2023			
HORIZON-MSCA-2023-SE-01-01			
Programme	Horizon Europe (HORIZON)	Status	Forthcoming
Type of action	HORIZON TMA MSCA Staff Exchanges	Deadline model	single-stage
Opening date	05 October 2023	Deadline date	28 February 2024 17:00:00 Brussels time

Below this entry, the details for "MSCA Staff Exchanges 2024" are also visible:

MSCA Staff Exchanges 2024			
HORIZON-MSCA-2024-SE-01-01			
Programme	Horizon Europe (HORIZON)	Status	Forthcoming
Type of action	HORIZON TMA MSCA Staff Exchanges	Deadline model	single-stage
Opening date	10 October 2024	Deadline date	05 March 2025 17:00:00 Brussels time

22

Staff Exchanges 2023 – Funding & Tenders Portal

General information

Programme
Horizon Europe Framework Programme (HORIZON)

Call
MSCA Staff Exchanges 2023 (HORIZON-MSCA-2023-SE-01) [See budget overview](#)

Type of action
HORIZON-TMA-MSCA-SE HORIZON TMA MSCA Staff Exchanges

Type of MGA
HORIZON Unit Grant [HORIZON-AG-UN] Forthcoming

Deadline model
single-stage

Planned opening date
05 October 2023

Deadline date
28 February 2024 17:00:00 Brussels time

Partner search announcements

Searches of partners to collaborate on this topic

94 [View / Edit](#)

LEARs, Account Administrators or self-registrants can publish partner requests for open and forthcoming topics after logging into this Portal, as well as any user having an active public Person profile.

European Commission

23

Starting an application

Start submission

To access the Electronic Submission Service, please click on the submission-button next to the **type of action** and the **type of model grant agreement** that correspond to the correct entry point.

To access existing draft proposals for this topic, please login to the Funding & Tenders Portal and select the My Proposals page of the My Area section.

Please select the type of your submission:

HORIZON TMA MSCA Staff Exchanges [HORIZON-TMA-MSCA-SE], HORIZON Unit Grant [HORIZON-AG-UN]

[Start submission](#)

[Need help?](#)

European Commission

24

Reference Documents

European Commission

25

Proposal documents

Part A
(structured data)

(to be filled online) contains administrative information about the applicant organisations

Part B1 and B2
(description of action)

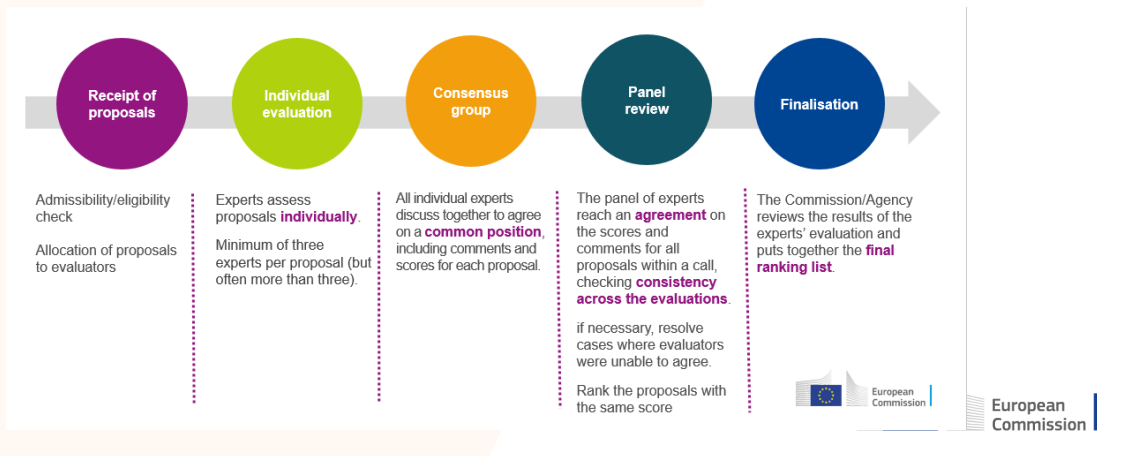
(to be downloaded from the Portal) contains the technical description of the project

European Commission

26

SE – evaluation

Overview of the process



27

Evaluation criteria


Excellence	Impact	Quality and efficiency of the implementation
Quality and pertinence of the project's research and innovation objectives (and the extent to which they are ambitious, and go beyond the state of the art)	Developing new and lasting research collaborations , achieving transfer of knowledge between participating organisations and contributing to improving research and innovation potential at the European and global level	Quality and effectiveness of the work plan , assessment of risks , and appropriateness of the effort assigned to work packages
Soundness of the proposed methodology (including i3 approaches, consideration of the gender dimension and other diversity aspects, and the quality of open science practices)	Credibility of the measures to enhance the career perspectives of staff members and contribution to their skills development	Quality, capacity and role of each participant, including hosting arrangements and extent to which the consortium as a whole brings together the necessary expertise
Quality of the proposed interaction between the participating organisations in light of the research and innovation objectives	Suitability and quality of the measures to maximise expected outcomes and impacts , as set out in the dissemination and exploitation plan, including communication activities	
	The magnitude and importance of the project's contribution to the expected scientific, societal and economic impacts	
50%	30%	20%



28

Tips and tricks

- Closely follow the call requirements**
 Be in line with the action's objectives and expected outcomes
- Follow available guidelines**
 Use the structure provided in the template and address all the evaluation criteria
- Highlight the EU dimension**
 Show that your proposal addresses EU policy priorities and/or societal challenges
- Get a second opinion**
 Have your proposal proof-read by a colleague and pre-screened by your NCP
- Sustainability of collaboration**
 Describe the benefits of cooperation and how they can go beyond this project
- Contact your National Contact Point (NCP)**



29

MSCA SE Info Session

[Staff Exchanges Info Session web-streaming from 2022](#)

Next one 8 December 2023 – watch out!

© European Union 2021
 Unless otherwise noted the reuse of this presentation is authorised under the [CC BY 4.0](#) license. For any use or reproduction of elements that are not owned by the EU, permission may need to be sought directly from the respective right holders. Image sources: iStockphoto.com/Unsplash



30



Thank you!

European Research Executive Agency
#MSCA #HorizonEU
@REA_research @MSCActions
https://rea.ec.europa.eu/funding-and-grants/horizon-europe-marie-sklodowska-curie-actions_en

 © European Union 2021
Unless otherwise noted the reuse of this presentation is authorised under the [CC BY 4.0](https://creativecommons.org/licenses/by/4.0/) license. For any use or reproduction of elements that are not owned by the EU, permission may need to be sought directly from the respective right holders. Image sources: iStockphoto.com/Unsplash

 European Commission